

MÄRJAMAA



I osavõistlus, 28.04.2019

C-RADA/C-COURSE

Esmaabi/Help: 50 12 872

Rajameister/Course planner Elo Saue

START

RATAS/BIKE 9km

Kohustuslik lõik tänava ületuseni
Mandatory section to street cross

- | | |
|--------------------------------|---|
| 1. (94) Monument/Statue | 3 |
| 2. (97) Tee rist/Road junction | 3 |
| 3. (85) Aia nurk/Fence corner | 3 |
| 4. (81) Tee rist/Road junction | 3 |

LÜ algus/ST start:

Punktides 6 ja 7 on kummaski üks eraldi number.
Nende abil lahenda 7segmenti ülesanne KPs 8.
In controls 6 and 7 is one separate number.

By these solve 7segment task in CP 8.

- | | |
|---|---|
| 5. (80) Metsa nurk/Forest corner | 3 |
| 6. (87) Ruum varemetes/Room in ruins | 3 |
| 7. (88) Kraavi ületus/Watercourse cross | 3 |

LÜ/ST

Lahenda 7segmenti ülesanne vastavalt juhistele ja läbi 3 KPd õiges järjekorras.

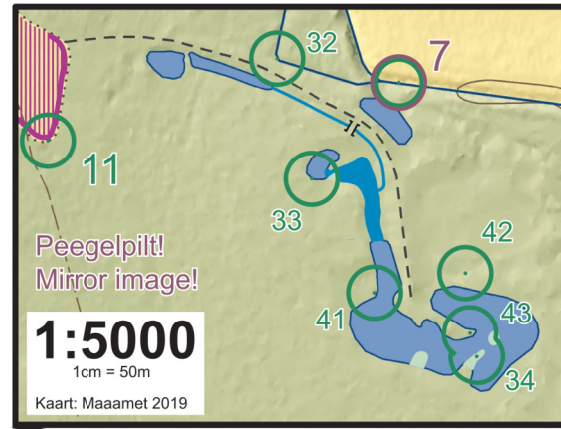
Saad kontrollida tulemust punktis numbriga 34.

Solve 7segment task according to instructions and mark 3 CPs in correct order.

You can check your result in CP with code 34.

- | | |
|-------------------------------------|---|
| (32) Kraavi käänak/Watercourse turn | 3 |
| (33) Järve serv/Lake side | 3 |
| (34) Maanina ots/End of landnose | 3 |
| (41) Järve serv/Lake side | 3 |
| (42) Kungas/Knoll | 3 |
| (43) Maanina ots/End of landnose | 3 |
| 11. (89) Põllu nurk/Field corner | 3 |
| 12. (100) Vahetusala /Exchange area | 3 |

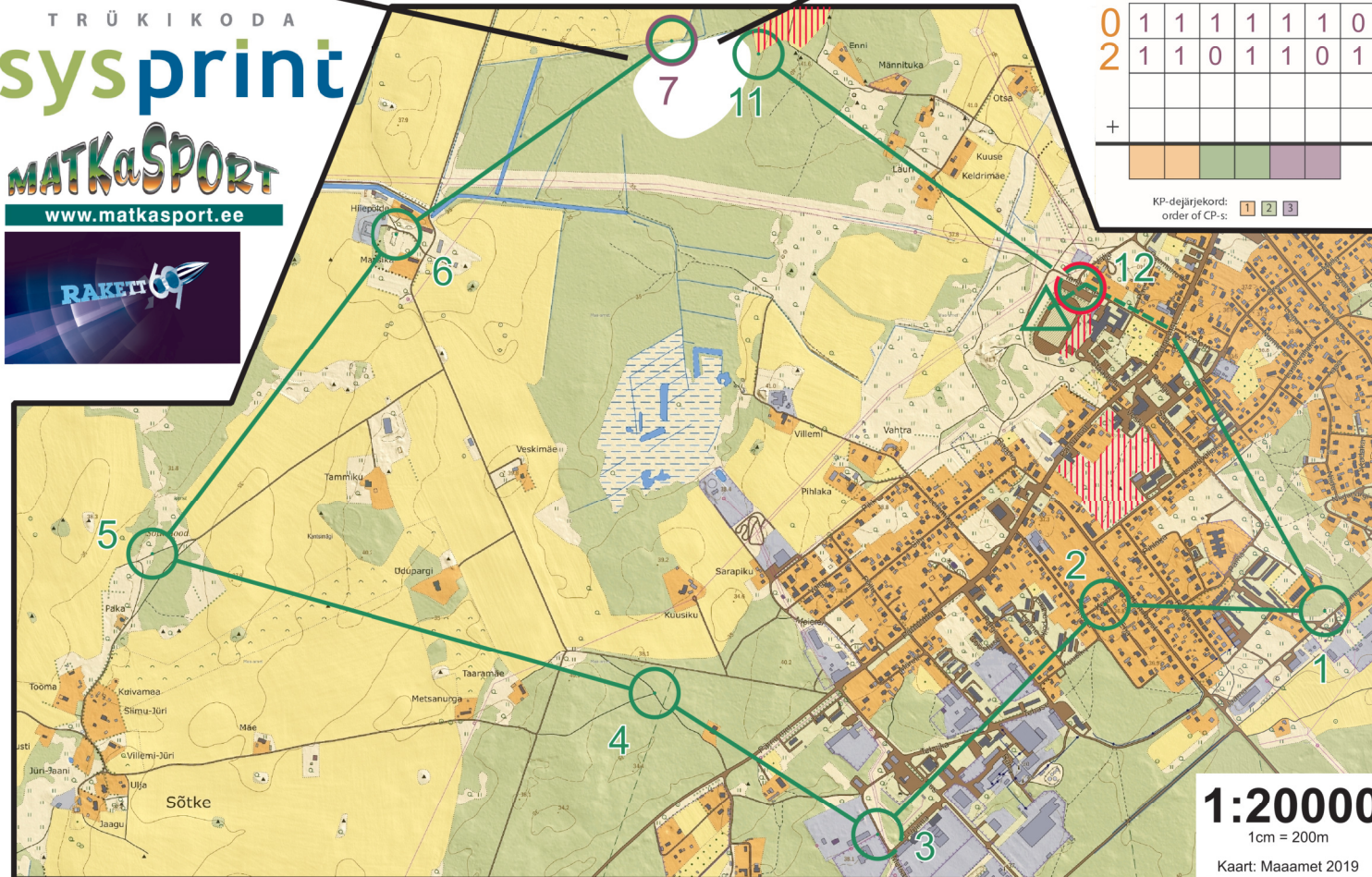
ace Logistics



TRÜKIKODA
sysprint

MATKASPORT

www.matkasport.ee



1:20000
1cm = 200m
Kaart: Maaamet 2019

SEITSEMSEGMENTI ÜLESANNE

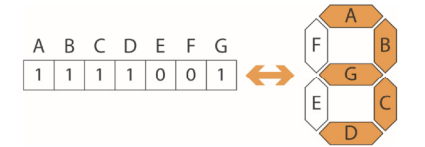
Teisendage KP-dest leitud 2 numbrit vastavalt juhendile nullide ja ühtede jadaks.

Seejärel liitke kõik neli jada elementide kaupa.

Saadud jada kuus esimest liiget (kolm esimest paari) annavad kolme KP õige läbimise järjekorra.

SEVEN-SEGMENT TASK

Transform the numbers found in CP-s to the array of ones and zeros according to the instruction. Sum all four arrays element by element. The six first elements (the first three pairs) of the output array will give the correct order for the three CP-s.



	A	B	C	D	E	F	G
0	1	1	1	1	1	1	0
2	1	1	0	1	1	0	1
+							

KP-dejärjekord:
order of CP-s: 1 2 3