

- ... KANUU/CANOE 6,4km
- 32. (108) Jõe käänak/River bend 2
- 33. (109) Puu/Tree 2
- 34. (110) Jõe käänak/River bend 3
- 35. (111) Jõe käänak/River bend 3
- 36. (112) Jõe käänak/River bend 3
- 37. (113) Jõe käänak/River bend 3
- 38. (114) Jõe käänak/River bend 3
- 39. (115) Vahetusala/Exchange area 1

Kõik vestid, aerud ja kanuu vahetusalasse!
All vests, paddles and canoe to exchange area!
JOOKS/RUN >3km

Kohustuslik jõe ületus/Mandatory river crossing
Valikorienteerumine, võta 5KPd 10st!
Free order, take 5CP out of 10!

- (68) Kraavi rist/Watercourse junction 3
- (69) Kraavi käänak/Watercourse turn 3
- (70) Kuuskede vahel/Between spruces 3
- (71) Soo N ots/Swamp N corner 3
- (72) Hoone nurk/Building corner 3
- (73) Poollageda nurk/Semiopen ground corner 3
- (74) Kraavi rist/Watercourse junction 3
- (75) Poollageda nurk/Semiopen ground corner 3
- (76) Tee rist/Road junction 3
- (77) Noorendiku nurk/Young forest corner 3
- 45. (67) Tee rist/Road junction 3
- 46. (66) Vahetusala /Exchange area 3

RATAS/BIKE 7,5km
LÜ algus/ST start:
Punktides 47, 48, 49 ja 50 igas on üks eraldi number.
Nende põhjal lahenda seitsmesegmendi ülesanne
KP 52.-54.jaoks
In controls 47, 48, 49 and 50 is one different number.
By these solve seven-segment task for CP 52.-54.

- 47. (78) Põllu nurk/Forest corner 3
- 48. (79) Post/Post 3
- 49. (80) Metsa nurk/Forest corner 3
- 50. (87) Ruum varemetes/Room in ruins 3
- 51. (88) Kraavi ületus/Watercourse cross 3

Lahenda 7segmenti ülesanne vastavalt juhistele ja läbi vajalikud 3 KPd õiges järjekorras.

Saad kontrollida tulemust KPs numbriga 34.
Solve 7segment task according to instructions and mark 3 CP in correct order.

You can check your result in CP with code 34.

- (32) Kraavi käänak/Watercourse turn 3
- (33) Järve serv/Lake side 3
- (34) Maanina ots/End of landnose 3
- (41) Järve serv/Lake side 3
- (42) Küngas/Knoll 3
- (43) Maanina ots/End of landnose 3
- 55. (89) Põllu nurk/Field corner 3
- 56. (100) Vahetusala /Exchange area 3

JOOKS/RUN 2km
57. (99) LÜ ronimine/ST climbing 1
58. (101) Puu/Tree 3

- 59. (102) LÜ takistusrada algus/ST obstacle course start 3
- 60. (103) Rehviseina üleval/Up of tire wall 1
- 61. (104) LÜ takistusrada lõpp/ST obstacle course end 3

- 62. (105) Küngas/Knoll 3
- 63. (106) Küngas/Knoll 3
- 64. (107) Aed/Fence 3
- FINIŠ/FINISH Kaare all/Under the arc 3



MÄRJAMAA

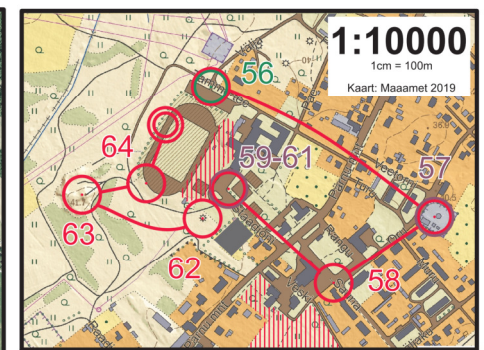
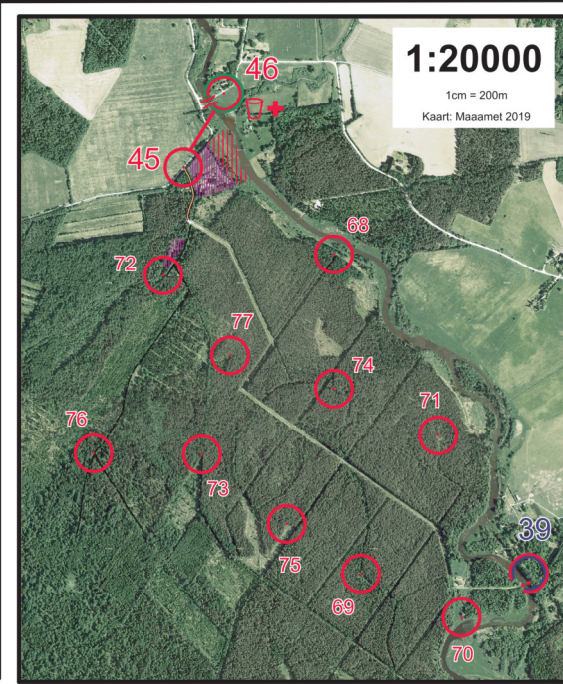
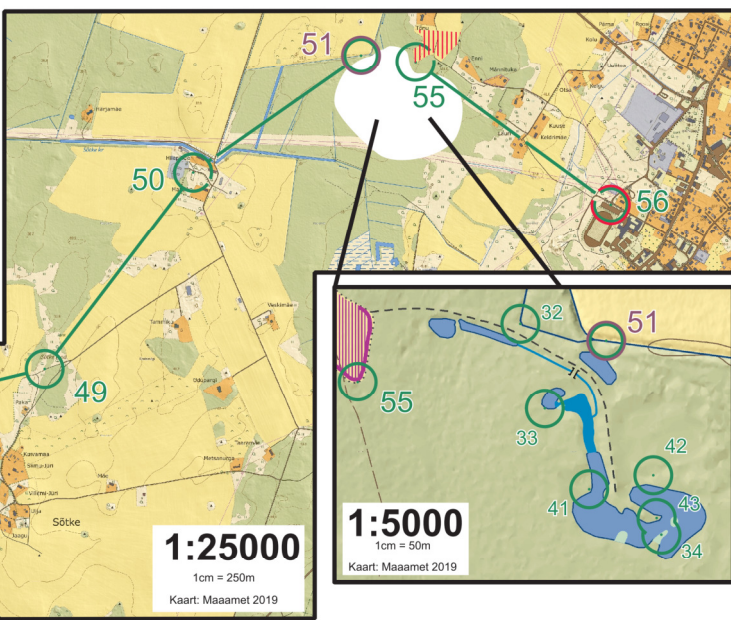
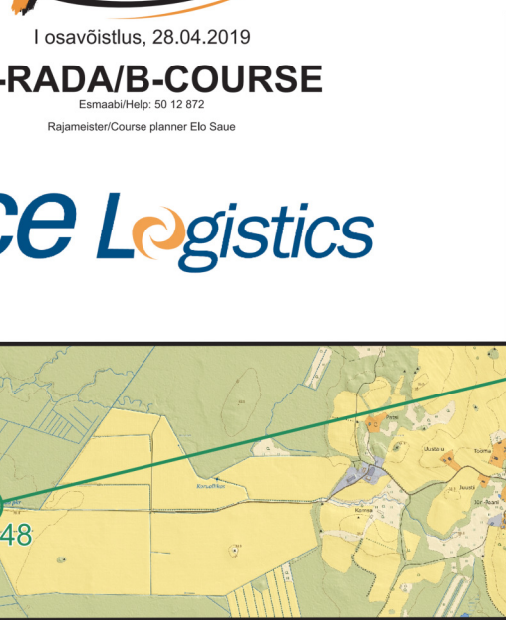
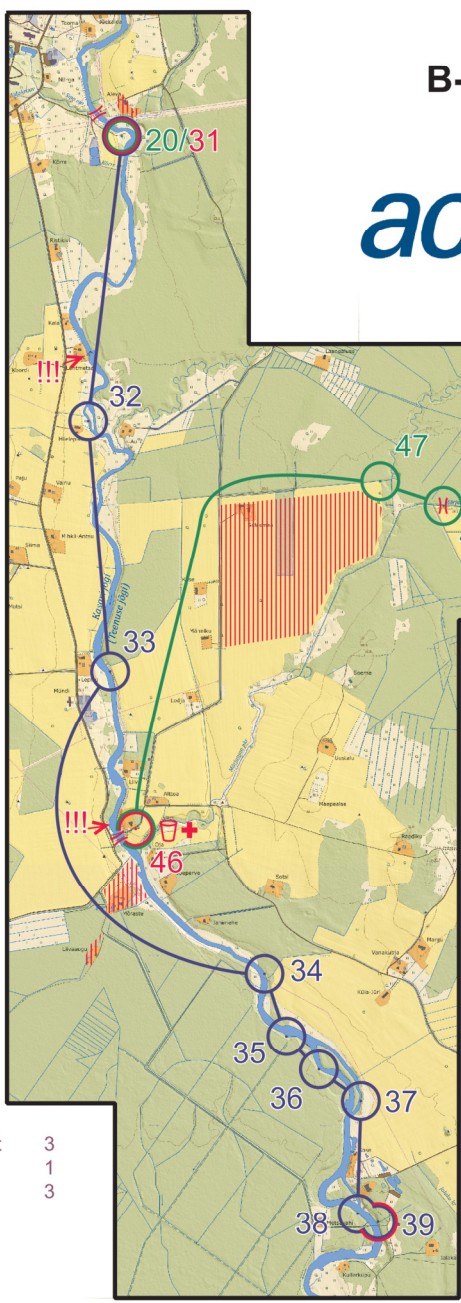


I osavõistlus, 28.04.2019

B-RADA/B-COURSE

Esmabi/Help: 50 12 872

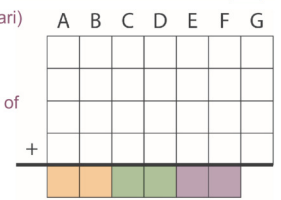
Rajameister/Course planner: Elo Saue



SEITSMESSEGMENTI ÜLESANNE
Teisendage KP-dest leitud number vastavalt juhendile nullide ja ühtede jadaks. Seejärel liitke kõik neli jada elementide kaupa. Saadud jada koos esimest liiget (kolm esimest paari) annavad kolme KP õige läbimise järjekorra.



SEVEN-SEGMENT TASK
Transform the numbers found in CP-s to the array of ones and zeros according to the instruction. Sum all four arrays element by element. The six first elements (the first three pairs) of the output array will give the correct order for the three CP-s.



KP-dejärjekord: order of CP-s: 1 2 3

